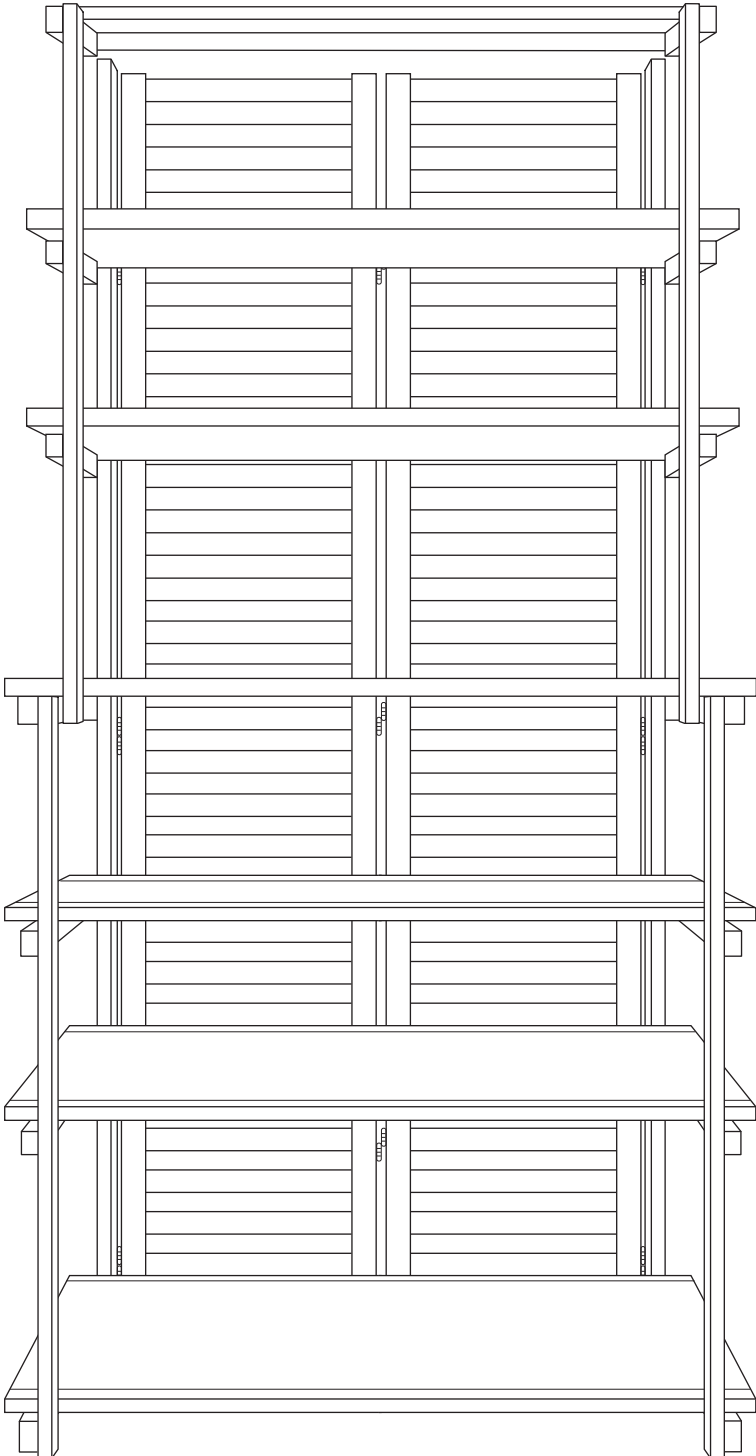


# ASSEMBLY INSTRUCTIONS MANUAL

#68332 WOODEN BAKER'S RACK - NATURAL FINISH

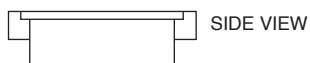
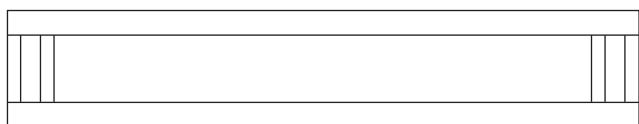


# ASSEMBLY INSTRUCTIONS MANUAL

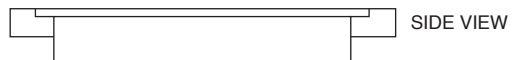
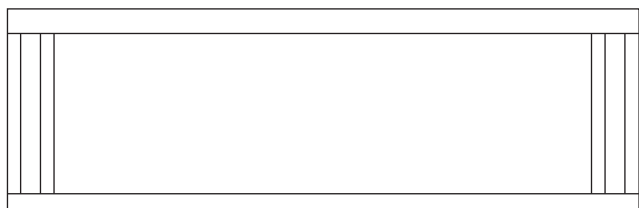
## #68332 WOODEN BAKER'S RACK - NATURAL FINISH

### PARTS IN CARTON:

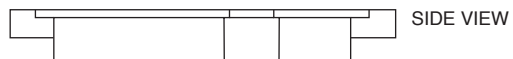
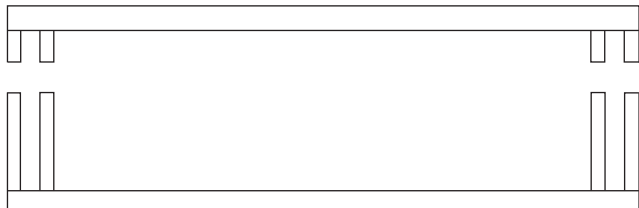
61/2" X 34" - WOODEN SHELF / BOTTOM VIEW  
(3 EACH)



11" X 34" - WOODEN SHELF / BOTTOM VIEW  
(3 EACH)



11" X 34" - WOODEN SHELF - SLOTTED / BOTTOM VIEW  
(1 EACH)

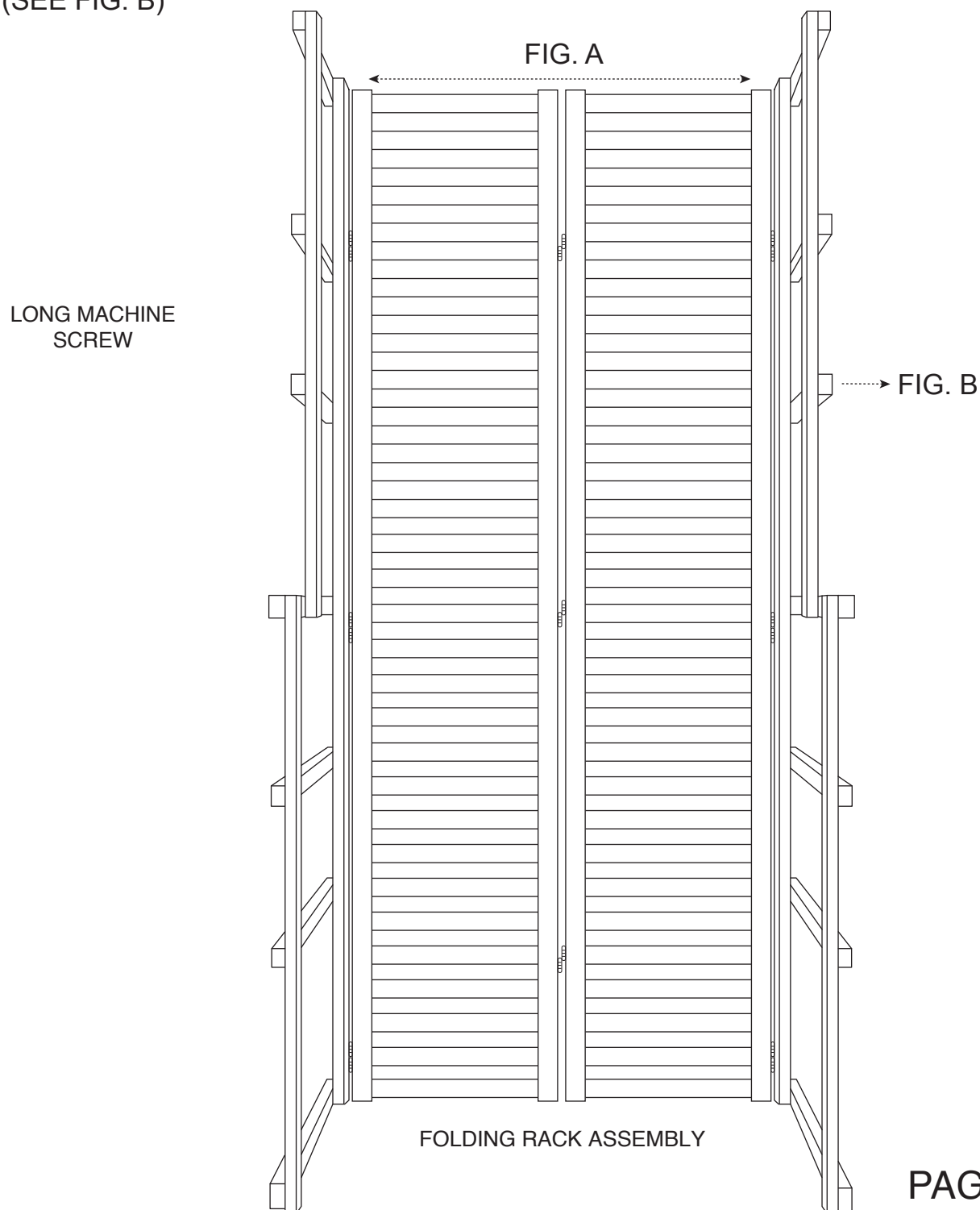


# ASSEMBLY INSTRUCTIONS MANUAL

## #68332 WOODEN BAKER'S RACK - NATURAL FINISH

**STEP 1.** OPEN FOLDING RACK UNIT SO THE BACK PART IS STRAIGHT (SEE FIG. A).

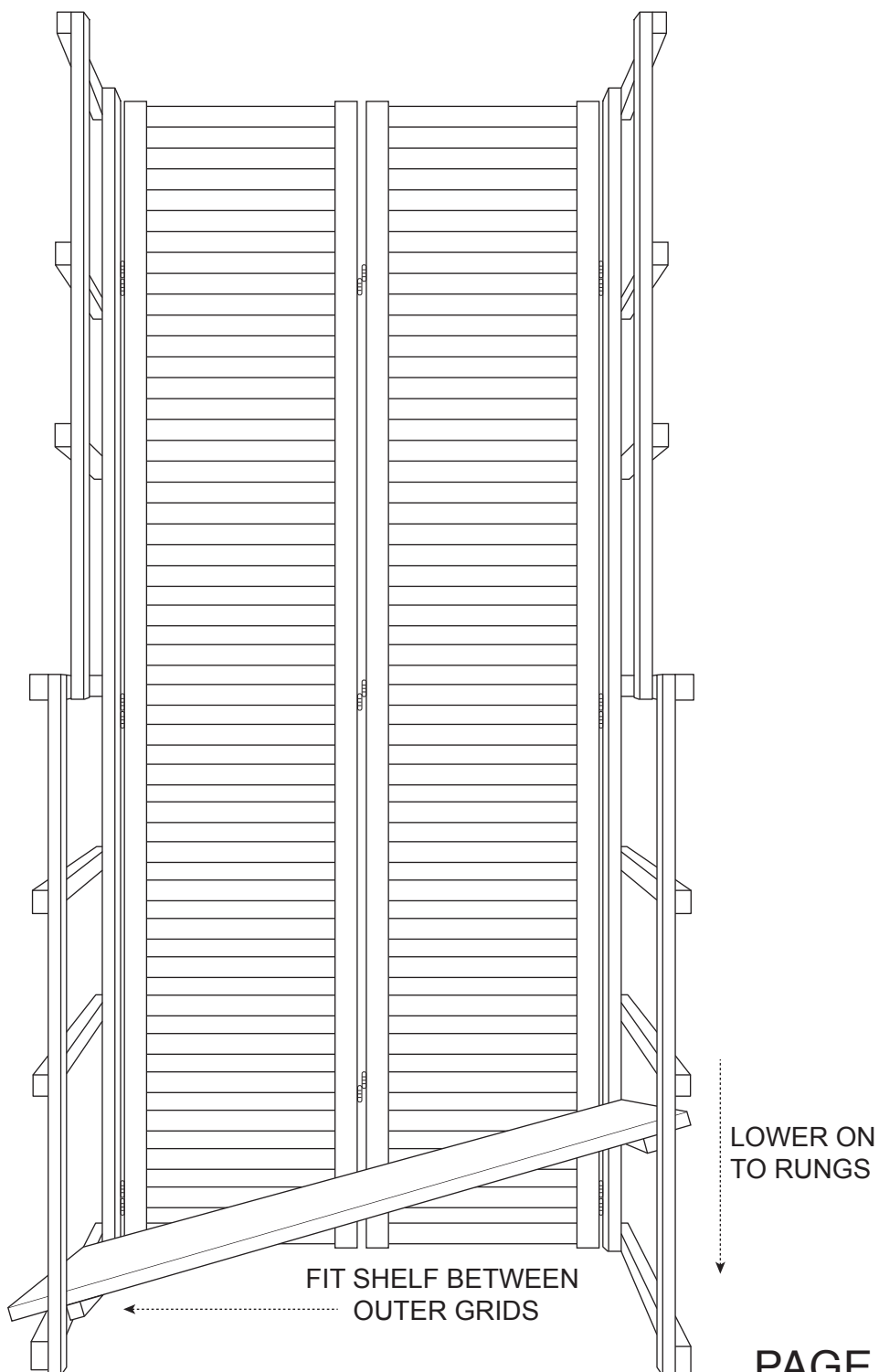
FOLD OUT SIDES SO SHELF RUNGS ARE FACING OUTSIDE OF THE RACK UNIT.  
(SEE FIG. B)



# ASSEMBLY INSTRUCTIONS MANUAL

## #68332 WOODEN BAKER'S RACK - NATURAL FINISH

**STEP 2.** START WITH THE BOTTOM SHELF (11" X 34"), TILT SIDWAYS SO THE SHELF FITS IN BETWEEN THE OUTER GRIDS, THEN LOWER ON TO RUNGS.



# ASSEMBLY INSTRUCTIONS MANUAL

## #68332 WOODEN BAKER'S RACK - NATURAL FINISH

**STEP 3.** REPEAT STEP 2 FOR THE REMAINING SHELVES. \*NOTE / 4TH SHELF IS SLOTTED / THE TOP 3 (5, 6 & 7) ARE 6.5" X 34". MAKE SURE ALL SHELVES ARE SNUG AGAINST THE BACK WALL.

THIS COMPLETES THE ASSEMBLY.

